

TAPTITE 2000®

Thread forming screw for metals

Recommended for use in metals, TAPTITE 2000® employs the unique Trilobular™ design and Radius Profile™ thread. These features provide excellent mechanical, assembly and ergonomic benefits, and offer end-users enhanced opportunities to reduce the overall cost of assembly.

Features & Benefits

- Requires low axial end load to initiate thread forming
- Trilobular™ shape provides high prevailing torque
- Ergonomically-designed and assembly- friendly solution
- Excellent axial alignment
- High strip-to-drive ratio
- Excellent torque tension relationship
- Superior vibration resistance



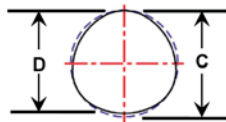
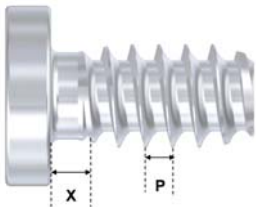
Material : Carbon steel and stainless steel.

Head Type : Available in any head style.

Point Type : Available in any point type.

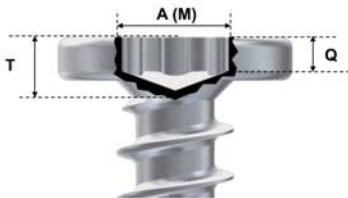
Recess : TORX®, TORX PLUS®, TOTSUPURA® & JCIS Cross. Other recesses are available upon request.

Fastener Dimensions



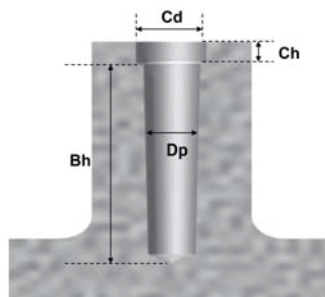
Part Name	Major Diameter		Thread Pitch P	Thread Runout X	Min. Breaking Torque	Min. Seating Torque
	C	D				
	mm	mm	mm	mm	Nm	Nm
Taptite 2K- 10	0.98	0.95	0.25	0.25	0.06	0.04
Taptite 2K- 12	1.18	1.15	0.25	0.25	0.12	0.08
Taptite 2K- 14	1.38	1.35	0.30	0.30	0.19	0.13
Taptite 2K- 16	1.57	1.53	0.35	0.35	0.28	0.20
Taptite 2K- 18	1.77	1.73	0.35	0.35	0.44	0.31
Taptite 2K- 20	1.97	1.93	0.40	0.40	0.60	0.42

Recess Dimensions



Part Name	TORX PLUS®				JCIS Cross			
	Recess Size	Width A	Penetration Depth (Min) Q	Penetration Depth (Max) Q	Recess Size	Width M	Total Recess Depth (Min) T	Total Recess Depth (Max) T
		mm	mm	mm		mm	mm	mm
Taptite 2K- 10	3IP	1.17	0.30	0.45	#0	1.65	0.56	0.84
Taptite 2K- 12	3IP	1.17	0.35	0.50	#0	1.65	0.56	0.84
Taptite 2K- 14	3IP	1.17	0.35	0.50	#0	1.65	0.56	0.84
Taptite 2K- 16	5IP	1.45	0.50	0.65	#0	1.90	0.81	1.10
Taptite 2K- 18	6IP	1.75	0.50	0.65	#0	2.10	1.01	1.31
Taptite 2K- 20	6IP	1.75	0.50	0.85	#0	2.10	1.01	1.31

Recommended Pilot Hole Size



Part Name	Pilot Hole Size Dp	Counter Bore Depth Ch	Counter Bore Diameter (Min) Cd	Counter Bore Diameter (Max) Cd	Boss Height Bh
	mm	mm	mm	mm	mm
Taptite 2K- 10	0.82	0.25	1.00	1.03	Thread length + 1 pitch
Taptite 2K- 12	1.02	0.25	1.20	1.23	
Taptite 2K- 14	1.19	0.30	1.40	1.43	
Taptite 2K- 16	1.35	0.35	1.59	1.62	
Taptite 2K- 18	1.55	0.35	1.79	1.82	
Taptite 2K- 20	1.72	0.40	1.99	2.02	

Manufacturing Range

Part Name	Nominal Diameter	Nominal Length															
		mm															
Taptite 2K- 10	1.00	3.00	3.50	4.00	4.50	5.00	6.00	7.00	8.00	9.00	10.00						
Taptite 2K- 12	1.20	3.00	3.50	4.00	4.50	5.00	6.00	7.00	8.00	9.00	10.00	12.00					
Taptite 2K- 14	1.40	3.00	3.50	4.00	4.50	5.00	6.00	7.00	8.00	9.00	10.00	12.00	14.00				
Taptite 2K- 16	1.60		3.50	4.00	4.50	5.00	6.00	7.00	8.00	9.00	10.00	12.00	14.00	16.00			
Taptite 2K- 18	1.80		3.50	4.00	4.50	5.00	6.00	7.00	8.00	9.00	10.00	12.00	14.00	16.00	18.00		
Taptite 2K- 20	2.00			4.00	4.50	5.00	6.00	7.00	8.00	9.00	10.00	12.00	14.00	16.00	18.00	20.00	

Product Length Tolerance ± 0.30 ± 0.38 ± 0.45 ± 0.55 ± 0.65

Initial product testing is recommended for optimum performance during assembly. For more information, please contact your nearest Unisteel representative.

TAPTITE 2000® is a registered trademark of Research Engineering & Manufacturing Inc (REMINC) and Conti Fasteners AG (CONTI).



Unisteel Headquarters
 Unisteel Technology Limited
 Tel : +65 6634 6366
 Email : sales@unisteeltech.com

www.unisteeltech.com

A member of **SFS**